



MONTHLY MEMBERSHIP PROGRESS REPORT

District 201N5

Results as of: 06/30/2019

GMT: ANN ELDRIDGE

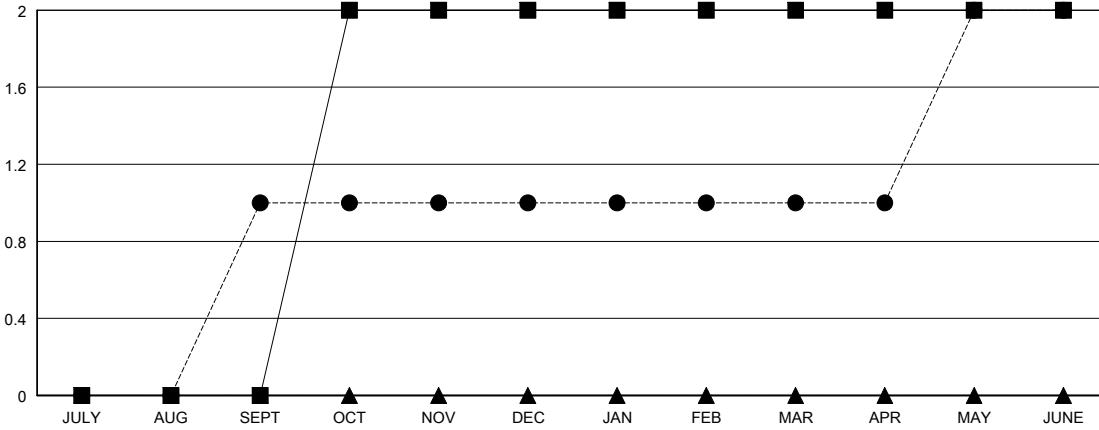
LOCATION AUSTRALIA

GMT CA

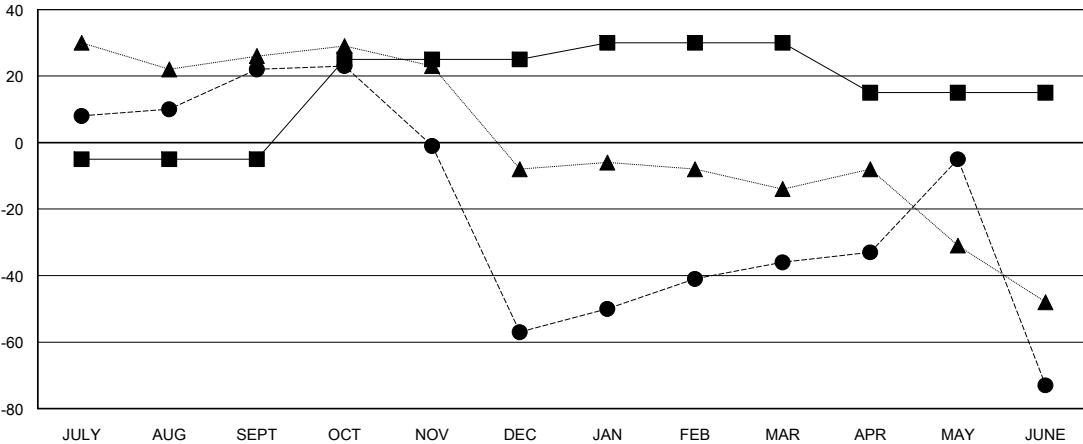
Clubs			
RESULTS FOR 2018-2019			
QUARTER	NEW CLUB GOAL	NEW CLUBS	DROPPED CLUBS
JULY/AUG/SEPT	0	1	0
OCT/NOV/DEC	2	0	0
JAN/FEB/MAR	0	0	2
APR/MAY/JUNE	0	1	0

Members			
RESULTS FOR 2018-2019			
QUARTER	MEMBER GROWTH NET GOAL	MEMBER GROWTH ACTUAL	DROPPED MEMBERS ACTUAL (including transfers)
JULY/AUG/SEPT	-5	88	59
OCT/NOV/DEC	30	45	121
JAN/FEB/MAR	5	45	22
APR/MAY/JUNE	-15	87	105

GOALS AND ACTUAL NEW CLUBS CUMULATIVE



GOALS AND ACTUAL MEMBERS CUMULATIVE



DROPPED CLUBS: 2	46 CLUBS OF 76 ADDED 1 OR MORE NEW MEMBERS	<u>GENDER DISTRIBUTION</u> MALE 968 (64.40%) FEMALE 535 (35.60%) Women Percentage Fiscal Year Goal: 45%
<u>DROPPED MEMBERS</u> DECEASED 10 CLUB CANCELLED 0 OTHER 297 TOTAL 307	CLICK HERE FOR CUMULATIVE MEMBERSHIP DATA	TOTAL FAMILY UNIT MEMBERS 193 FAMILY MEMBERS PAYING HALF DUES 99